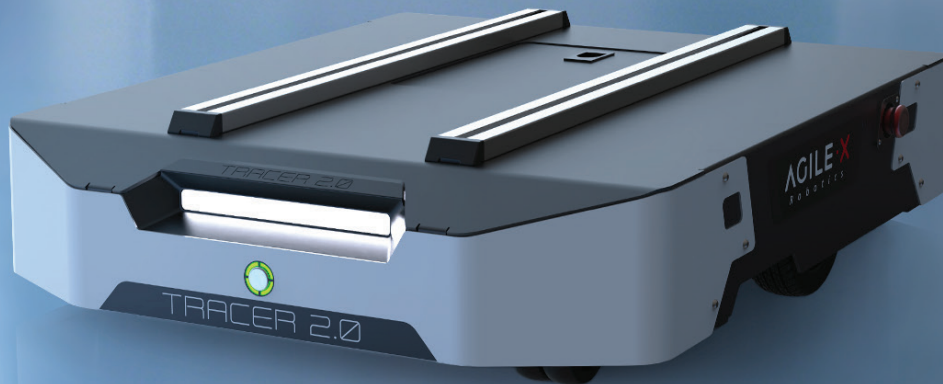




TRACER 2.0

Two-wheel differential AGV



Industrial-level reliability

Research-level flexibility

Specialized design for research and factory logistics differential AGV chassis with high load capacity, long endurance, fast speed, optimized interfaces, secondary development support, and powerful intelligent performance.

360°

Turning in
Place

825mm

Turning
Radius

2m/s

Maximum
Speed

150kg

Load
Capacity

6h

Endurance

Support for
Secondary
Development

Basic parameters

Dimensions: 702×610×169mm

Weight: 54-56kg

Wheelbase: 517mm

Rated payload 150kg

Movement performance

Speed: 2.0m/s (Full load)

Climbing angle: 8°

Obstacle clearance: 10mm

Braking distance: 0.9m
(Empty, deceleration 0.5)

Electrical performance

Battery type: 24V30Ah Lithium battery

Charging time: 3 hours

Max-endurance: 80km

Output power: 24V15A

Safety control

Motor type: 2×400W Brushless motor

Encoder parameter: Magnetic 2500

Suspension type: Swing arm non-independent suspension

Brake method: Brushless brake

Environmental Adaptability

Working temperature: -10~40°

Protection level: IP22

Suitable surface: Flat ground
(no grass or gravel)

Minimum turning radius: 27mm

Expansion accessories



Lidar



IPC



RTK



Binocular depth camera